

PART OF SEC. 29 & 32, T.7N., R.1E., S.L.B.&M.

37

SILVER BELL ESTATES NO. 2

LOTS 72, 82-89 & 115-121

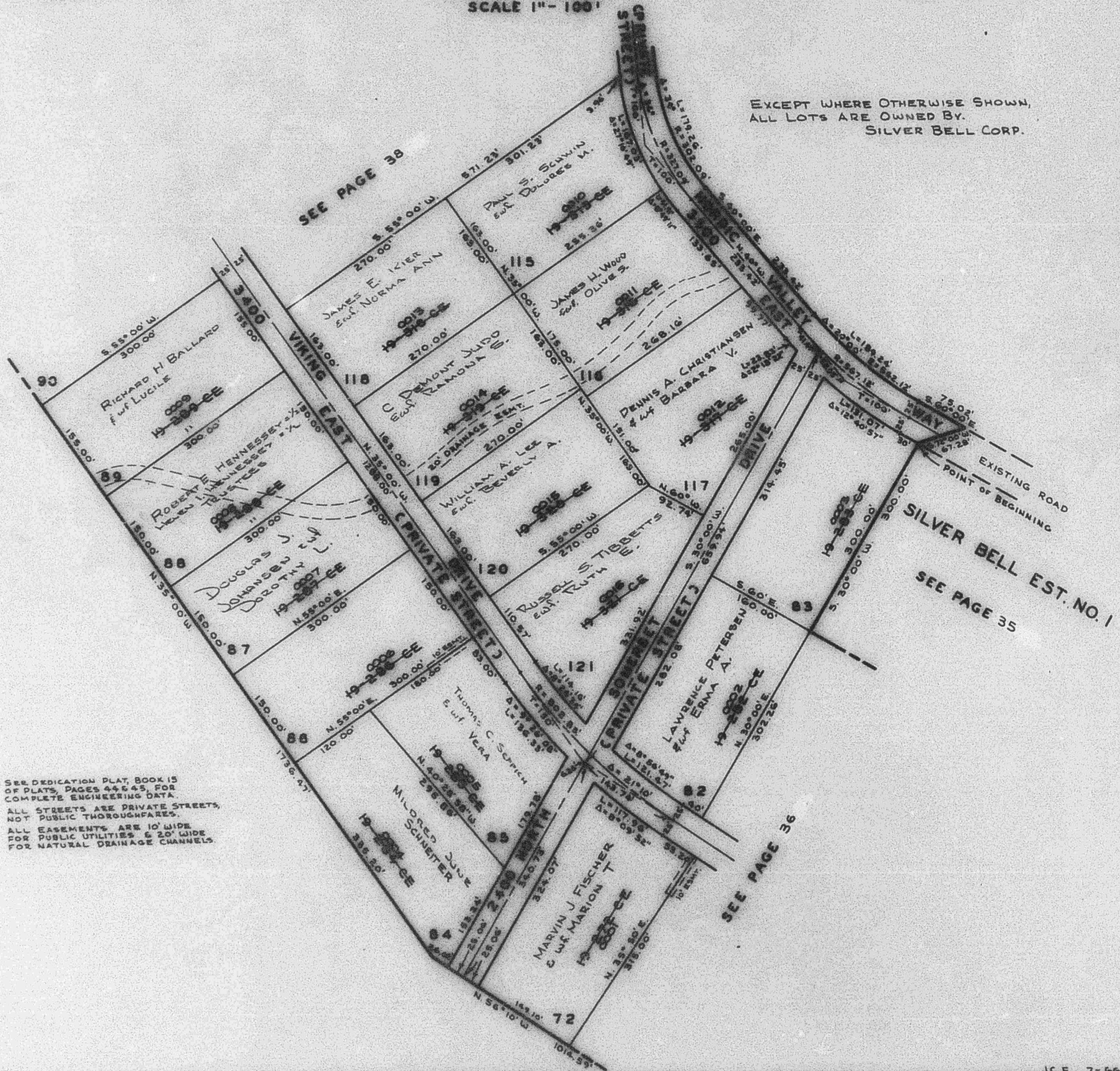
WEBER COUNTY

SCALE 1" = 100'

TAXING UNIT: 28

PREFIX: 22-037

EXCEPT WHERE OTHERWISE SHOWN,
ALL LOTS ARE OWNED BY:
SILVER BELL CORP.



NOTE: SEE DEDICATION PLAT BOOK 15 OF PLATS, PAGES 44 & 45, FOR COMPLETE ENGINEERING DATA.
ALL STREETS ARE PRIVATE STREETS, NOT PUBLIC THOROUGHFARES.
ALL EASEMENTS ARE 10' WIDE FOR PUBLIC UTILITIES & 20' WIDE FOR NATURAL DRAINAGE CHANNELS.